

February

Tuesday 11th

School Council -
Finance Meeting

Wednesday 12th

After School Greek Begins

Friday 14th

Stepping up Begins

Monday 17th

Prep starts full-time!

Tuesday 18th

School Council Meeting
- no sub-committee

Thursday 20th

District Swimming

Friday 21st

5/6 Interschool Sports

Monday -
Wednesday 24-26

Grade 5/6 camp

March

Tuesday 4th

Getting to know you
Meetings

Monday 10th

Labour Day PUBLIC
HOLIDAY - NO STUDENTS

Friday 14th

5/6 Summer Gala Day

Monday 31st

School Photos



Clarinda
Primary School

Issue 1

6 February 2025

From the Principal's Desk...

Communications

Communications will predominantly flow through Compass as the first port of call, so I encourage families to make sure they have this app. Families will be set up with Classroom DoJo for any other communication between home and with the teacher.

The school has an official Facebook page that is used to celebrate events and promote the school. Please visit us at <https://www.facebook.com/clarindaprimarieschool>

Getting to Know You Meetings - Tuesday 4th March

Parents of all students are invited to book a time convenient to them. Bookings can be made via our Compass online system. You will have the option of either choosing to attend the interview in person or 'online' via WebEx.

The purpose of these interviews is twofold. Parents and guardians are encouraged to attend to:

- Meet their child's teacher to begin an effective home/school partnership.
- Provide information to teachers regarding their child's strengths, talents, issues or concerns.

Information shared by parents to teachers will assist us to plan for and work as effectively as possible with you and your child throughout the year. Interviews will be 10 minutes in length.

2025 Parent Payments Reminder

We are now welcoming voluntary parental/carers contributions for 2025, hoping that our community will recognise the value of investing a modest amount to support their child's education. Comparing other schools, our requested contribution is quite reasonable, and we know that many schools are asking for significantly more. These funds are used to enhance our curriculum programs, allowing us to offer a higher standard than we would otherwise be able to provide. Payments can be made through Compass or at the front office. A big thank you to the families who have already made their contributions—your support is greatly appreciated!

School Council Elections

Information regarding the 2025 School Council election process has been sent to families via Compass. I would encourage any interested parent to contact me for more information. School council is an extremely vital part of the school, and it is from council that we take our direction. Council approves external contracts, provides advice and consent on a range of areas and oversees school finance. Please look out for this if you think you may be interested in nominating or being nominated. Information includes a timeline and summary of the role of School Council.

The first School council meeting of the year is scheduled for 7pm (no sub-committee) on the 18th of February.

2026 Enrolments

For 2026 Foundation (prep) enrolments, a new process is being rolled out across the state. Existing CPS families will have priority, but it would be extremely helpful if current families could enrol as early as possible next term, so that we can identify how many places will be available for new families. Given the nature of the new process, we would be very happy if families could simply call the office in the meantime and advise us if you have a child that will be commencing in 2026.

As per previous years, we will be prioritising sibling claims and new enrolments from inside our Designated Neighbourhood Area. Once we have done this, we will look to provide clarity for those enrolling from outside of our area, as per the Department's guidelines (see below).

From the Principal's Desk...

continued from previous page

Priority Order of Placement

In circumstances when a school may not be able to accept all applications due to existing or future capacity concerns, schools must manage enrolment applications in accordance with the following priority order of placement:

- students for whom the school is the designated neighbourhood school.
- students with a sibling at the same permanent address who are attending the school at the same time.
- where the Regional Director has restricted the enrolment, students who reside nearest the school.
- students seeking enrolment on specific curriculum grounds.
- all other students in order of closeness of their home to the school.

Gate Opening and Closing Times

As in previous years, students should be arriving at 8:40am to be ready in line at 8:50am so that they can enter their classroom and be ready for learning/instruction at 9am.

Gates will be unlocked by 8:40am each morning. The reason behind this is in order to maintain student safety. Staff are not on duty until 8:40am and students who enter the schools' grounds prior to this are unsupervised and at risk. In previous years we saw a growing number of students entering the grounds as early as 8am without adult supervision. For families where both parents work and therefore need to drop off their children prior to 8:40am, the school provides an Out of School Hours Care program that runs from 7am to 8:40am.

The front gate will always remain open during the day for access to the office and as a late entry and early exit point, whilst side gates will be shut. All students arriving after 9am must sign in at the office.

Parents are welcome on site at any time. We only ask that parents remain out of the classrooms prior to school starting as staff prepare for the day ahead. It is also important for students to build their resilience and part of this is entering the rooms on their own (with the exception of preps in the first week or so).

The side gates will be locked at 3:40pm with a warning bell sounded at 3:37pm. Any students remaining at school at 3:40pm will be escorted to the school administration office for collection. It is expected that students who are not collected by 3:40pm are registered for Out of School Hours care, so that they can be placed in care in the event that families cannot collect their children by 3:40pm.

From the Principal's Desk...

continued from previous page



What sort of start is your child getting?

Just a little bit late doesn't seem much but...

Only missing...	That equates to...	Which is...	Over 13 years of schooling...
10 minutes per day	50 minutes per week	Nearly 1 ½ weeks per year	Nearly ½ a year

Did you know that your child's best learning time is the start of the day?
That's when every minute counts.



Gates open



Warning bell



Learning starts

Kiss and Go Parking

A reminder to families that cars cannot be left unattended if you are using the Kiss and Go drop off and pick up zone. I understand the tendency to think that a quick trip to the office won't hurt, but parents leave themselves open to fines if a parking officer is in the area. Often, the first time you will know about it is when you receive the fine in the mail, as most fines are processed from photographic evidence. This will also assist the flow of traffic and ease of pick up and drop off for all families. I would also remind parents that the parking time limit in this area is **2 minutes**.



Car Parking

Parents are asked to be mindful of the parking restrictions around the school. Parking officers regularly patrol the school zone. The staff car park is strictly for staff cars only and parents must not enter this car park between 8am and 5:00pm. We have visiting staff entering and leaving on a regular basis, as such, pedestrians should not use the car park when entering and leaving the school. I would also encourage families to be mindful of our neighbours and avoid parking across driveways, in no standing areas or on nature strips. We thank you for your support in this matter as student safety is very important to us.

From the Principal's Desk...

continued from previous page

School Community Garden

Have you seen the garden? It is thriving... Our School Community garden started last year and it been delivering over the summer. I would like to acknowledge the contribution of Chris over the mild summer. Produce from the garden will be offered to our school community at Gate 2. All for free during Term 1.



Chris gardens most mornings. Anyone is welcome to assist in the garden. If you require more information, please contact Chris on 0490504631.

Labour Day Public Holiday

Parents are reminded that there is a Labour Day holiday on Monday 10th March. There will be no school on this day.

Working with Children Checks (WWC)

We encourage and value parental and community support at CPS. There are many ways that parents, grandparents and friends can assist at our school. We encourage all parents to obtain a Working with Children's Check that will allow you to be very involved in your child's education. These checks are free for volunteers. Once you have your WWC please come to the office so we can photocopy this, and we will add your name to our list of parents who have a current WWC check.

Annual Privacy Reminder

Our school collects, uses, discloses and stores student and parent personal information for standard school functions or where permitted by law, as stated in the [Schools' Privacy Policy](#).

Please take time to remind yourself of the school's collection statement, found on our website under Important Documents – Privacy Policy.

For more information about privacy, refer to: [Schools' Privacy Policy – information for parents](#). This information is also available in nine community languages:

- Amharic
- Arabic
- Dari
- Mandarin
- Somali
- Sudanese
- Turkish
- Urdu
- Vietnamese.

Accident Insurance

The Department of Education and Training (DET) does not provide personal accident insurance for students. Parents are generally responsible for paying the cost of medical treatment for injured students, including any transport costs. The Department of Education states that reasonable low-cost accident insurance policies are available from the commercial insurance sector. Similarly, DET (which includes the school) does not offer replacement of personal items which are brought to school and are lost, broken, or stolen. Sentimental or expensive belongings and toys, including sports equipment and electronic devices, are normally best left at home.



Mobile phones

Readers of the newsletter would be aware of the introduction of the state-wide policy on Mobile Phones in Victorian Government Schools. All students are required to turn off and hand in mobile phones to prevent usage during school hours. This also extends to smart watches where the call and messaging function can connect to the student's phone.

Devices will be placed in a locked cabinet/cupboard at the start of the day and handed back at the end of the day.

School Council has approved our Mobile Phone policy to ensure it is aligned to DET directives. A copy of this policy is available on our website.

Please discuss this with your child/ren to assist us in following this policy. We thank you for your support in this area.

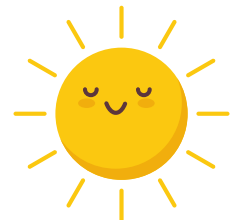
Hats

A reminder that hats must be worn in terms one and four. Sunscreen and sunglasses are also highly recommended.



Inclement Weather/Heat Policy

The school operates a heat policy and we keep the children indoors in air conditioned classrooms on very hot days where the temperature exceeds 35°C or as directed by the Principal. We have also been asked to remind our parent community about the dangers of leaving children in cars on very hot days.



School Policies

This year, Clarinda Primary School will be going through their school review, which is a requirement for all schools in Victoria to do every four years. As part of this process, we are sharing our Child Safety and Wellbeing Policies through our school newsletter. This is an opportunity for our community to provide feedback on their understanding of the policy and any questions they may have.

Child safety and wellbeing at Clarinda Primary School: Information for families and the school community

Clarinda Primary School is committed to providing an environment where students are safe and feel safe. We have a zero tolerance for child abuse and are committed to protecting children from harm. Our comprehensive child safety framework outlines our school's strategies to support student safety and wellbeing. The framework includes the following policies, codes and procedures:

- Child Safety and Wellbeing Policy
- Child Safety Code of Conduct
- Child safety Responding and Reporting Obligations Policy and Procedure
- Complaints Policy
- Student Wellbeing and Engagement Policy
- Bullying Prevention Policy
- Volunteers Policy
- Visitors Policy

Our students and their families are important partners in keeping our students safe. We value feedback and ideas on how we can continuously strengthen our child safety framework.

If you have any suggestions or comments please contact

Robbie Mallett on 95443231 or clarinda.ps@education.vic.gov.au

News Around the School!



ClassDojo

It has come to our attention that Class Dojo have been offering a 7 day free trial.

The functionalities Clarinda Primary use within Class Dojo can be accessed via their free app - **no subscription required**. If you have signed up and are not wanting to pay for the additional features - cancel the subscription **ASAP** via your phone settings - subscriptions.

Library News!

Book Club Ordering for 2025

Book Club orders are due online by Friday 14th February. You will have received your first Book Club magazine for 2025 this week. If you wish to order, could you please place your order online through the Scholastic website or scan the QR code below. See next page for instructions.

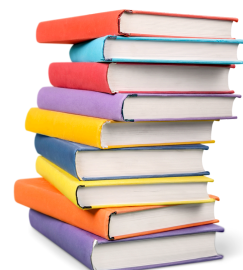
Please do not pay for your Book Club through the school office.

Your order and payment will go directly to Scholastic and your books will be delivered to the school with no additional cost to you. Once received by the school, we will distribute orders.

Thank you for your support, every order will earn Scholastic Reward points to assist with purchasing new books for our school.

Thank you

Carol Mckinley
Library Technician.




Book Club LOOP
for Parents

Hang
me up in your
classroom!

Healthy reading habits are forged through Book Club.
Parents can order books easily through the
Scholastic **LOOP** platform.

- 1** Log in, or create a new account at scholastic.com.au/LOOP
- 2** New parents can follow the Wizard to set up a child's profile
- 3** Click the ORDER tab, and select the child's school and Issue of Book Club
- 4** Select your child's name
- 5** Enter the product item number from the Book Club catalogue
- 6** Apply promotional codes that children may have earned from previous issues
- 7** Make a payment via credit card
- 8** Feel great about the Scholastic Rewards that have been earned for the school



ORDER TODAY
scholastic.com.au/LOOP



Outside School Hours Care

Newsletter



06/02/2025

Clarinda primary school

Your
OSHC.



Kindness Week in Before & After School Care



17-21 Feb

Book now

Dear parents and Families,

Welcome back to Term 1. Children are excited as we are looking forward to making new friendships in OSHC and explore new themes in our programs. Our children are busy celebrating Chinese New Year as we are decorating our service with Chinese lanterns, dragon puppets and other colorful crafts. We are celebrating kindness week where we encourage our children to meet new children and families feel welcomed through special baking session and other exciting fun games. Please book in your child or call at 0402353192 for any further enquiries

Activities coming up

- Minute to draw self-posters
- Vanilla cake baking
- Know me group games

Make a booking

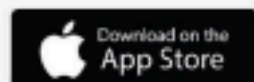
Join in the fun of Outside School Hours Care activities and experiences with Your OSHC and Rocketeers.

Book now



Register free and book in 24/7 via our app

To attend our program, you must register your child. You can register an account with us at pp.campastralia.com.au or by downloading our Camp Australia smartphone app from the Apple App Store or on Google Play. Once registered, it's easy to make bookings and manage your account.



Find out more and book now at www.campastralia.com.au

Community Advertising

BASKETBALL **SOCCER**

AFTER SCHOOL SPORTS

CRICKET

INDOOR SPORTS
SPRINGVALE

Mondays & Wednesdays **FREE TRIAL SESSION**
5:30 - 6:30
AGE GROUPS:
5-7 year olds | 8 - 11 year olds

KIDS PARTIES

- SPACE JUMP
- BUBBLE SOCCER
- SPORTS & JUMP
- NERF WARS
- DODGEM CARS
- LASER TAG

9547 2555
546 Springvale Rd. Springvale South

springvaleindoorsports.com.au

Give Your Child the Gift of Music

Learn a Musical Instrument

here at school

Come and join in the fun of learning to play keyboard, guitar, drums, here at Clarinda Primary School.

Creative Music for Schools conducts a music program here at school each week.

Small group classes or one-to-one lessons of up to 30 minutes give children an excellent grounding in music where they will learn to read music and play their chosen instrument.

Enrolments are now being accepted for limited places in term 1, 2025.

Interested parents should call Nicholas during office hours on 9818 2333 or via email: nicholas@creativemusic.com.au

Creative Music
www.creativemusic.com.au

Join us!
New members welcome

Bentleigh
Calisthenics

2 FREE COME N TRY CLASSES

Classes for all ages 3-26.

Tots & Tinies
Ages 3-7
Monday 4:15pm
Saturday 9:00am
Saturday 9:15am

Sub-Juniors
Ages 8-10
Wednesday 5:00pm
Saturday 11:00am

Juniors
Ages 10-13
Tuesday 4:45pm

Calisthenics is the sport with performing at its heart. It offers a unique combination of **dancing, singing, gymnastics** and **technical skill**.

Register here for 2 free come n try classes

9 & 11 Walter Street, Moorabbin
www.bentleighcalisthenics.com

ARE YOUR KIDS GETTING ENOUGH EXERCISE?

Active Monash offers a range of programs and services to help school aged children create healthy habits in a fun and safe environment.

The first class is on the house! Participate in one of the classes listed below to enjoy your first session **FREE**.

Try your first class **FREE**

ONLY \$8.50 PER CLASS

Active Kids: Kid friendly activities focus on developing fundamental motor skills in a fun filled environment. (ages 6+)
Monash Aquatic & Recreation Centre: Monday | 4:40pm

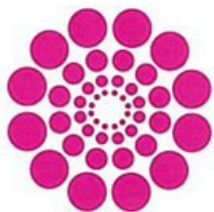
Active Abilities Kids: This class welcomes children with disabilities. Focus is on fitness, strength, building confidence, making friends and having fun. (ages 6+)
Monash Aquatic & Recreation Centre: Wednesday | 4:40pm

Teen Fit: A class specifically for teens designed with gym and bodyweight exercises which increase fitness, strength and cardio. (ages 12+)
Monash Aquatic & Recreation Centre: Thursday | 4:40pm

Please note: Our classes run for 45 minutes and align with the school term schedule, making them easy to fit your routine.

Monash Aquatic & Recreation Centre
626 Waverley Road, Glen Waverley
(03) 9265 4888
www.monshaquaticrecreationcentre.com.au

ACTIVE MONASH
Monash Health & Recreation Centre



AUSTRALIAN GIRLS CHOIR



Is this your daughter?

Look no further than the Australian Girls Choir because we encourage, challenge and inspire girls as they learn to sing, dance and perform.

**Join us at our
FEBRUARY OPEN DAY**



AUSTRALIAN SCHOOL OF PERFORMING ARTS

